

Operations Plant & Equipment Safety

***Rick Hellinga, CSP
Senior Director, Safety Services
Tyson Foods, Inc.***



Discussion Objectives

- Knowledge sharing
- Highlight common safety challenges
- Discuss possible solutions/concepts/technology
- Discuss current safety regulatory environment

“Disclaimer”

- The views expressed in this presentation are those of the presenter and may not be considered Tyson Company Policy, official regulatory or legal advice.

Safety Management

- Is Safety a “Priority” at your facilities?
- Should it be?
- Define “Value” & Define “Priority”?
- How can I tell if Safety is being managed effectively?

Common Safety Challenges

- Machine Guarding-consistent definition
- Lockout/Tagout Understanding & Implementation
- Housekeeping & Combustible Dust Control
- Language Barriers

Machine Guarding

- Point of Operation & Nip-Points
- Fixed, Adjustable, Self-Adjusting, Interlocking Guards
- Guarding by Distance/Location

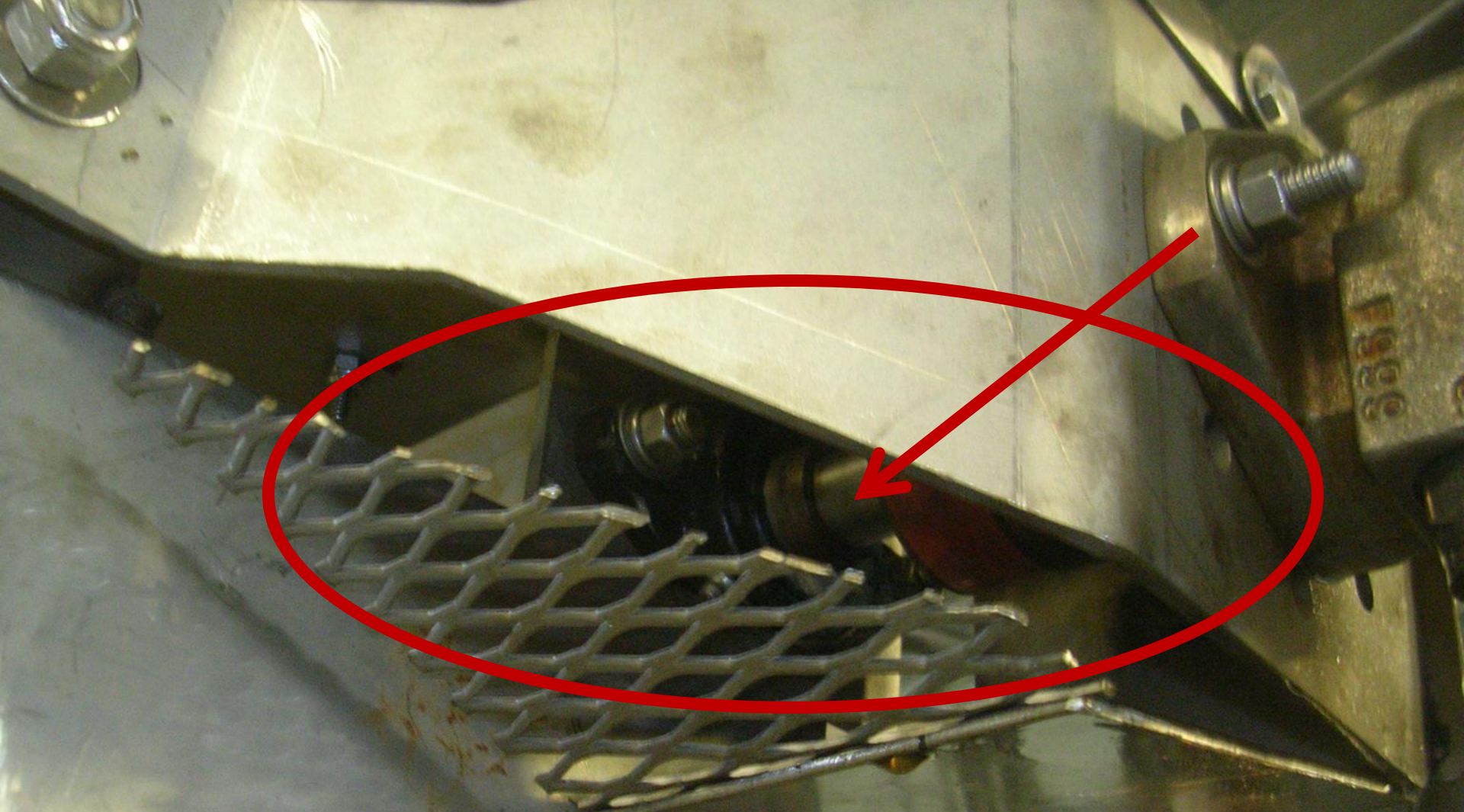
Nip Point Examples



Conveyor rotating shaft and sprocket rollers need to be guarded



Internal conveyor rotating shafts and rollers need to be guarded



Conveyor rotating lovejoy coupling not guarded completely

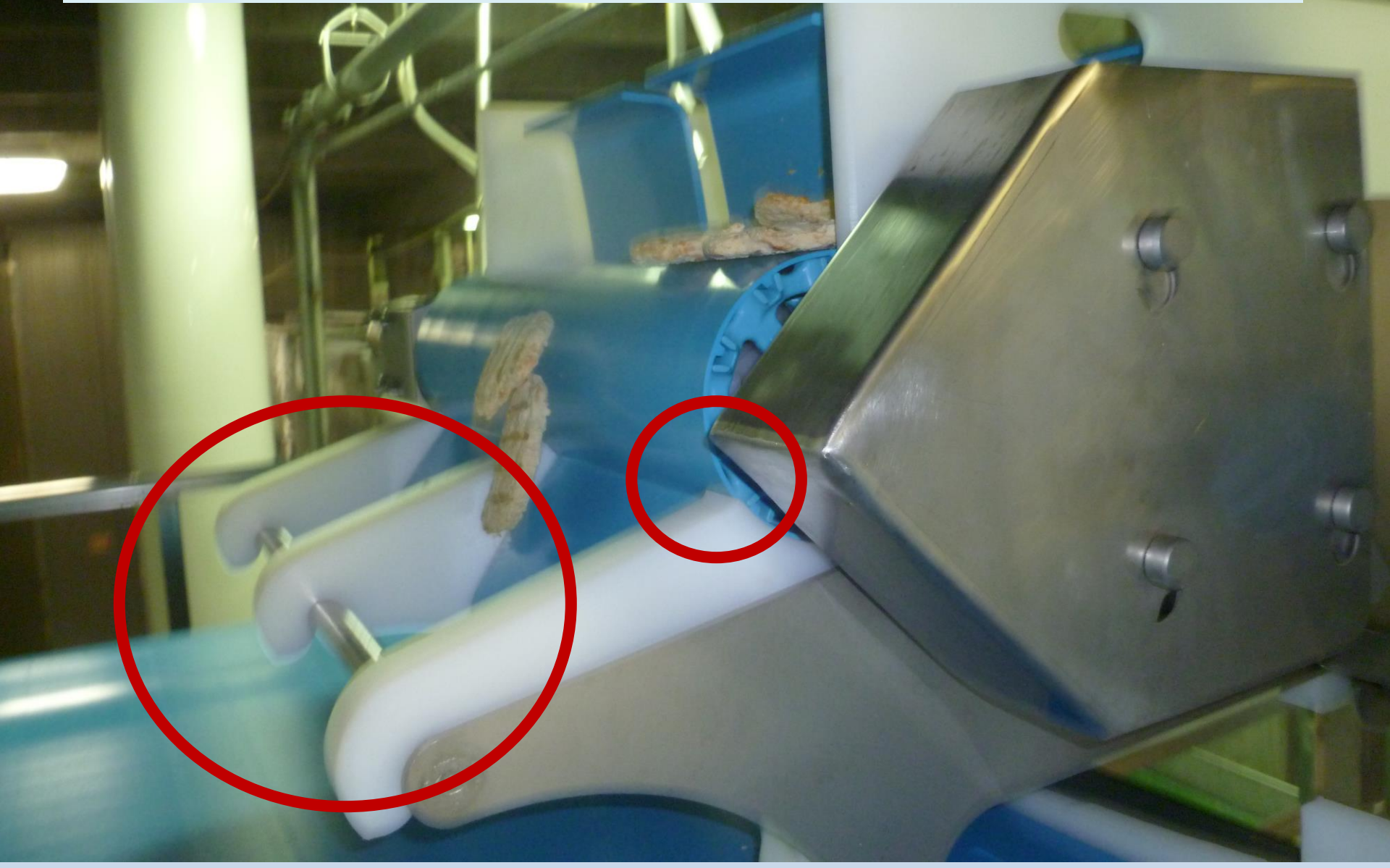
Rotating and extended shaft must be guarded or eliminated

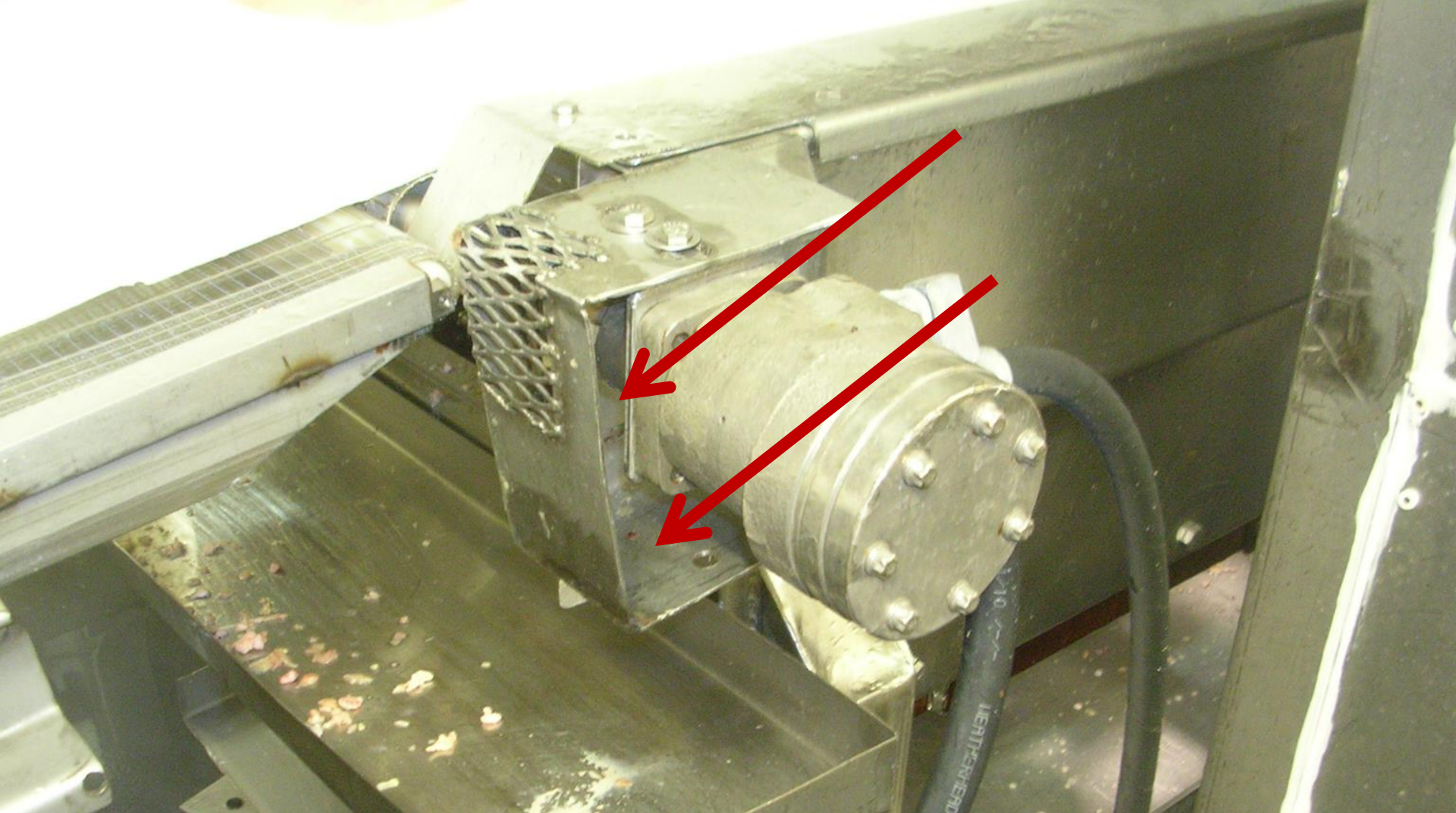




Rotating shaft needs to be guarded

Flighted belts and pinchpoints need to be guarded





Guards not adjusted properly to completely cover rotating parts

Guarding by Distance/Location

- What constitutes Guarding by Distance or Location?
- How far is far enough? 10 feet, 6 Feet, 2 Feet?

Prevention Through Design

- Address issues before equipment is installed
- Include FSQA, Operations, Safety, Maintenance, Purchasing
- Set and communicate standards to OEM's and Fabricators

Lockout/Tagout

- What are the minimum elements of an effective and compliant LOTO program?
 - In Writing & Available
 - Designated authorized and affect workers responsibilities/training
 - LOTO SOP's
 - LOTO Devices-Locks, Tags, Other Devices & Tags
 - SOP Reviews
 - Periodic Inspections
 - Alternate Procedures

Housekeeping & Combustible Dust

- Is a written Housekeeping program required by OSHA?
- How much is too much legible dust?
 - 1/8th inch currently – 1/32nd of an inch proposed
- Dust Control Methods
- Possible dust clean-up methods-Sweeping, Vacuuming, Washing, Blow-Down????

Employee Understanding

- How do you know your folks understand?
- Are language barriers an a Safety Management obstacle?
- What are some effective solutions being used to overcome this challenge?

Current Regulatory Environment

- New OSHA Reporting requirements-January 1, 2015
- LOTO SOP Reviews and Periodic Inspections
- Multi-Employer Worksites
- SVEP-OSHA's Hit List
- Safety Incentive Programs

QUESTIONS?

